

SYNERLIGHT™ - Living Proof's secret for brighter and clearer skin

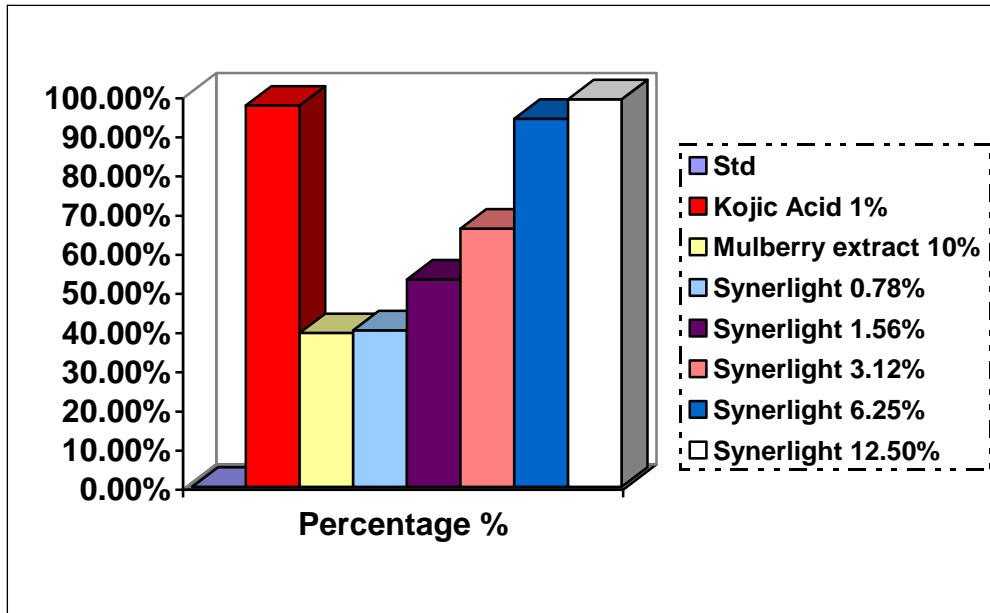
Skin whitening products are commercially available for cosmetic purposes in order to obtain a lighter skin appearance. They are also utilized for clinical treatment of pigmentary disorders such as melasma or post inflammatory hyperpigmentation. Whitening agents act at various levels of melanin production in the skin. Many of them are known as competitive inhibitors of tyrosinase, the key enzyme in melanogenesis

In cosmetic formulations hydroquinone has been widely used as an effective whitening agent but it has been banned recently because of serious safety concerns, its use has been connected with mutagenicity. Beside that, the use of kojic acid can gradually lighten dark spots, but was found to be highly unstable and can cause irritation to brown skin. Other active ingredient such as, Mulberry or Licorice, a botanical extract was shown to contain unstable tyrosinase inhibiting flavonoids that is harmful to the skin.

Today, new botanical extracts have been screened for this anti-tyrosinase activity and a synergy was discovered between *Sophora flavescens* root and kiwi (*Actinidia chinensis*). The combination of these two ingredients leads to a synergistic activity, which can be used to fight age spots as well as hyperpigmentation in scar tissue.



The following graph show the inhibiting activity of Synerlight upon tyrosinase- in vitro test



Graph 1: Whitening activity- Anti-tyrosinase efficacy tests

The result above reveals the high efficacy of Synerlight in inhibiting melanin production in inhibiting tyrosinase enzyme.

Witness a dramatic change as skin looks fresh and radiant with a noticeably clearer, brighter skin tone thank to Synerlight (Sophora extract and kiwi fruit water). Safer way to a lighter complexion.

✓ **No hydroquinone, mercury, steroids, or parabens**

Ultra Mild UV White Moisturiser



Living Proof Ultra Mild UV White Moisturiser is specially formulated for the sensitive skin. Apart from treating the dark shades and the discoloration of the skin, it also reduces acne spots, freckles and areas of uneven pigmentation.

Chamomile is renowned as a major analgesic, anti-inflammatory and wound healer, relieving pain, redness from any cause and promoting skin repair.

It is good for dry, red, hot and sensitive skin and is said to have anti-allergic properties.

Its SPF20 sunscreen properties also protect the skin from the damaging effects of UV rays from sunlight and fluorescent light

Whitening Cell Action Complex



Living Proof Whitening Cell Action Complex is formulated to make the appearance of the skin lighter. Apart from treating the dark shades and the discoloration of the skin it also reduces acne spots, freckles and areas of uneven pigmentation.

It contains Vitamin C, essential for maintaining healthy and strong connective tissues, especially the collagen and elastin fibres. Studies have shown, Vitamin C retards tyrosinase activities and reduces melanin formation (main cause of skin darkening) safely, without irritation or side effects. Vitamin C also reduces the appearance of dark spots and promotes even-toned skin.

Its SPF20 sunscreen properties also protect the skin from the damaging effects of UV rays from sunlight and fluorescent light.

Cell Action Skin Whitening Mask



Pamper skin with spa-quality facial with Living Proof Cell Action Skin Whitening Mask. Each treatment delivers a lavish dose of Synerlight, sodium lactate, and hyaluronic acid to your skin, perfect for an intensive whitening once or twice weekly.

Contains sodium lactate, a great humectant that provides powerful moisture retention in the skin, and also gives the benefit of skin lightening while hyaluronic acid hydrates the epidermal layer of the skin.

Why choose sheet mask against cream mask?

- It provides longer absorption time of the essence to penetrate into cells. Floods skin with whitening essence for 20 minutes to give maximum results without drying the skin.

- Sheet masks are cloth masks that are infused with skin whitening serum. The effect of the mask soaked in the essence firstly is to cool down the skin. Upon contact with the skin, the soaked mask cools down as it evaporates, drawing away heat from the skin. Cream masks however don't work as well for me to draw out the heat from the skin.
- Above all, sheet masks are convenient. After treatment, rinsing is not required unlike cream masks. Remaining essence are massaged onto skin.
- Sheet masks also make excellent travel companions.